

# Evanston Urban Forest Summary



**The Chicago Region Trees Initiative (CRTI)** goal is that, by 2050, the Chicago Region will support and host

a healthier urban forest, comprised of a diversity of tree species and ages, appropriately distributed across land use types in the region. The forest will provide the region improved environmental, economic, and social benefits. In order to achieve that goal CRTI works with a wide variety of people who work with and manage trees. This document is intended to help municipalities understand their urban forest, and identify strategies that they can use to make it better.

The *urban forest* is comprised of all of the trees in an urban setting, regardless of who owns or manages them. It is made up of street trees, forested natural areas and even the trees in resident's back yards. These trees are all included in the urban forest, because they all provide benefits that municipalities depend on. They improve air and water quality, reduce flooding and the urban heat island effect, and reduce energy use by shading buildings. Trees provide habitat for wildlife and improve residents' quality of life by reducing crime rates, increasing property value and boosting social cohesion in neighborhoods.

The magnitude of benefits that trees provide correlates with the size, structure and location of their canopy. Understanding the extent of tree canopy is critical for urban planning. Canopy maps can be used to quantify the benefits that their trees provide, identify where new plantings would have the greatest impact and to develop priorities and strategies for expanding the canopy.

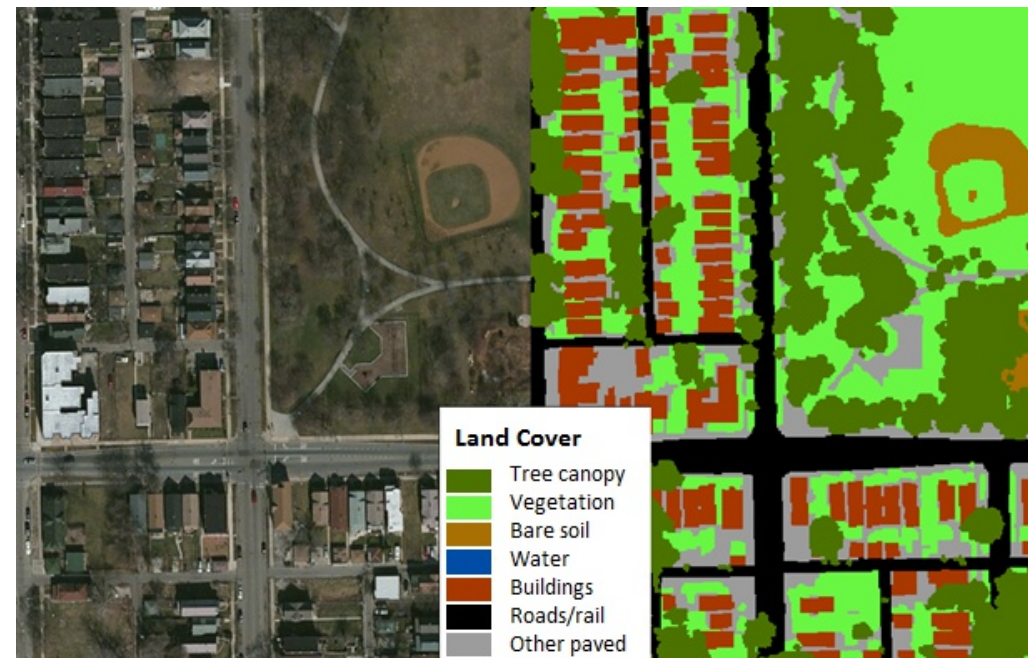
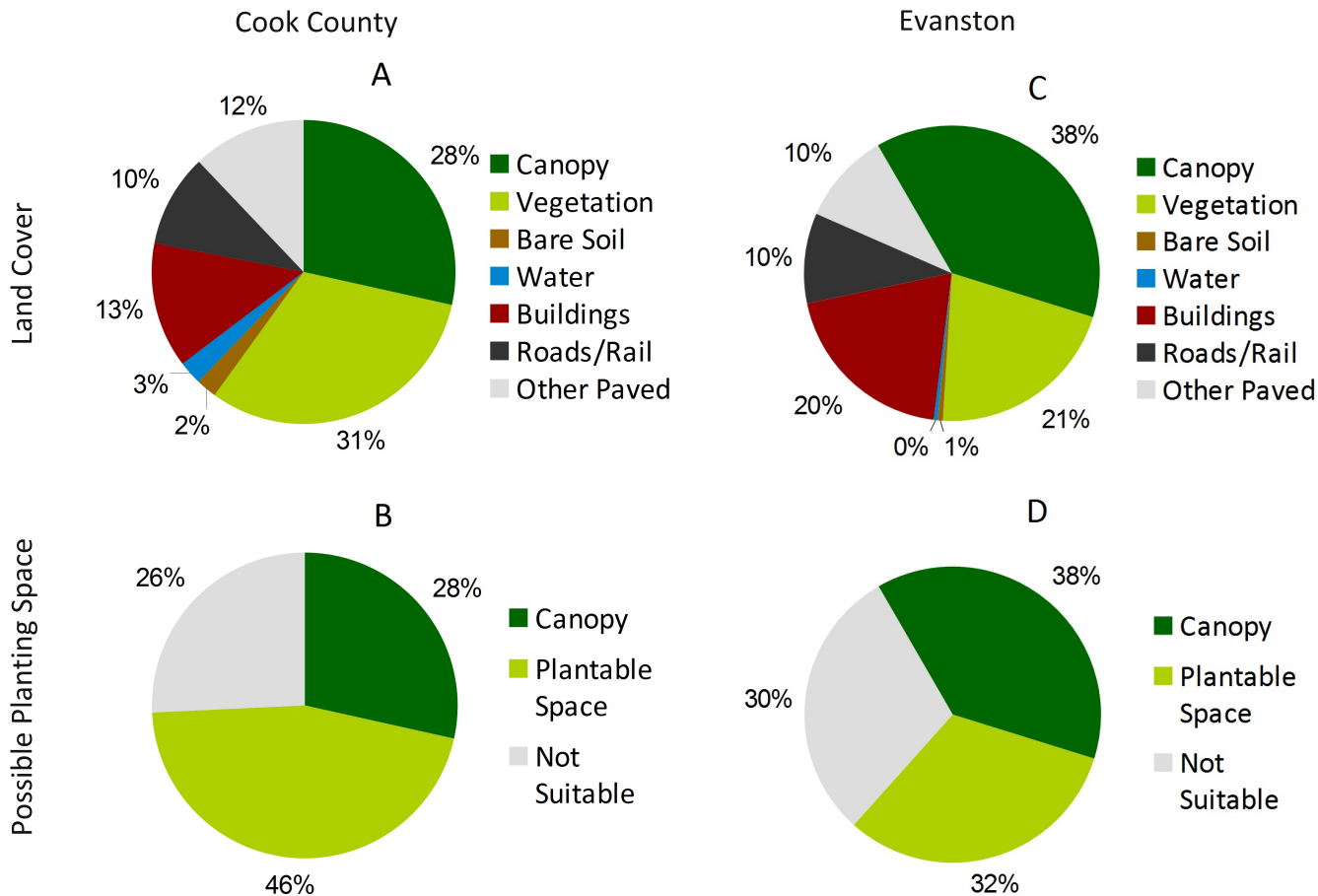


Fig. 1: Comparison of satellite image and land cover map. Seven types of gray and green infrastructure are in the land cover map.

The Chicago Region Trees Initiative, USDA Forest Service, American Forests, and the University of Vermont mapped land cover across the seven-county Chicago Region. This project not only identifies tree canopy, but also other green infrastructure including vegetation under 10 feet tall, bare soil and water; and gray infrastructure including buildings, roads and rail and other paved surfaces like sidewalks and parking lots (Fig. 1). Here after, these seven layers will be referred to as *land cover types*.

# Evanston Urban Forest Summary



Overall, 28% of Cook County is covered by tree canopy (Fig. 2). There is a lot of room for growth across the county. We can identify spaces where trees could potentially be planted by adding together the vegetation, bare soil and other paved surface land cover types, as these land cover types could be converted to canopy with minimal effort. In all, these land cover types make up 46% of the county's area, meaning that canopy cover could potentially be raised to 74% if all of these surfaces were converted to trees. It is important to note, that while these surfaces could theoretically be covered with canopy, it is not necessarily preferable. Agricultural fields and baseball diamonds are included as "plantable space," but few would agree that these are ideal sites to expand the forest canopy.

These land cover data can also describe canopy at the municipal scale. Evanston currently has 38% canopy cover, and could potentially increase their canopy to 70% (Fig. 2).

Fig 2: Cook County's current land cover (A), including 28% canopy cover. An additional 46% of the county is suitable for planting (B). Evanston currently has 38% canopy cover (C), and 32% of the land cover could potentially be converted to canopy (D).

# Evanston Urban Forest Summary



Percent land cover by land use

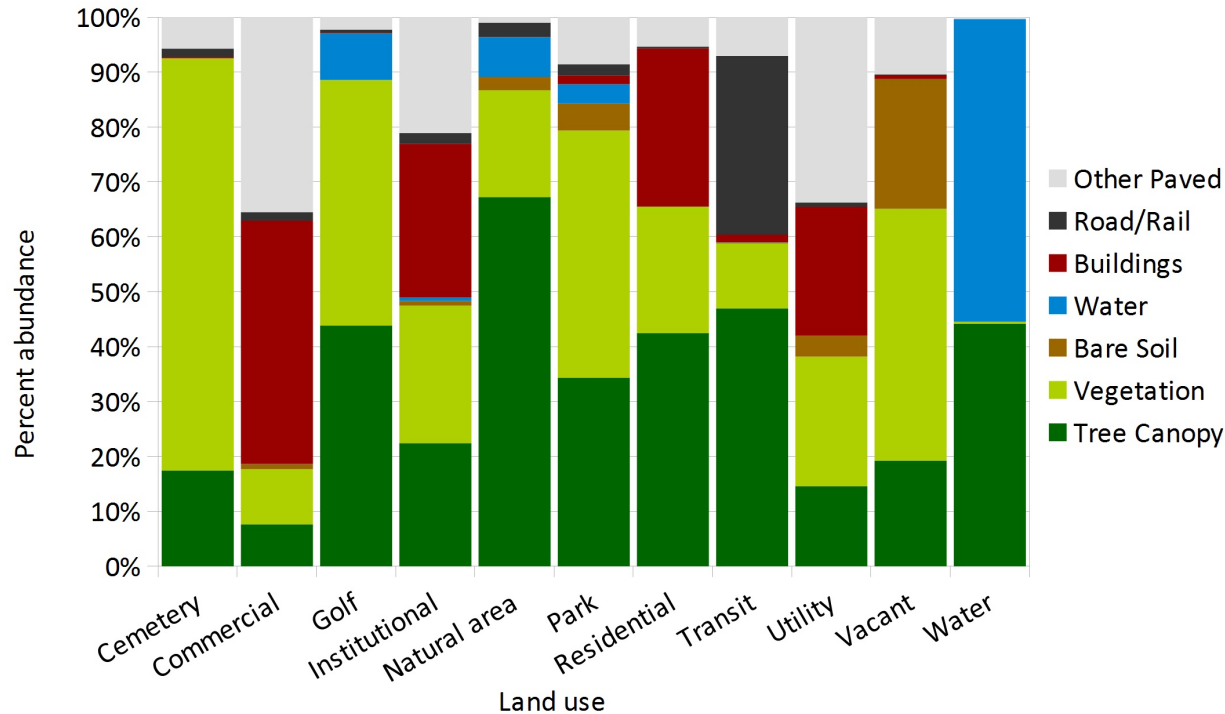


Fig 3: Variations in land cover across land use types.

Canopy cover is not distributed evenly across the region, nor within municipalities. To better understand how land cover patterns vary, we can compare them across land use types, like residential, commercial or park properties. In Evanston, the highest percentage of canopy is found in natural areas and transit (Fig 3). Commercial and utility properties and have the lowest canopy cover. As one might expect, transit areas have the largest proportion of roads, and residential and commercial land use types have an abundance of buildings. See Table 1 at the end of this report for more details.

# Evanston Urban Forest Summary

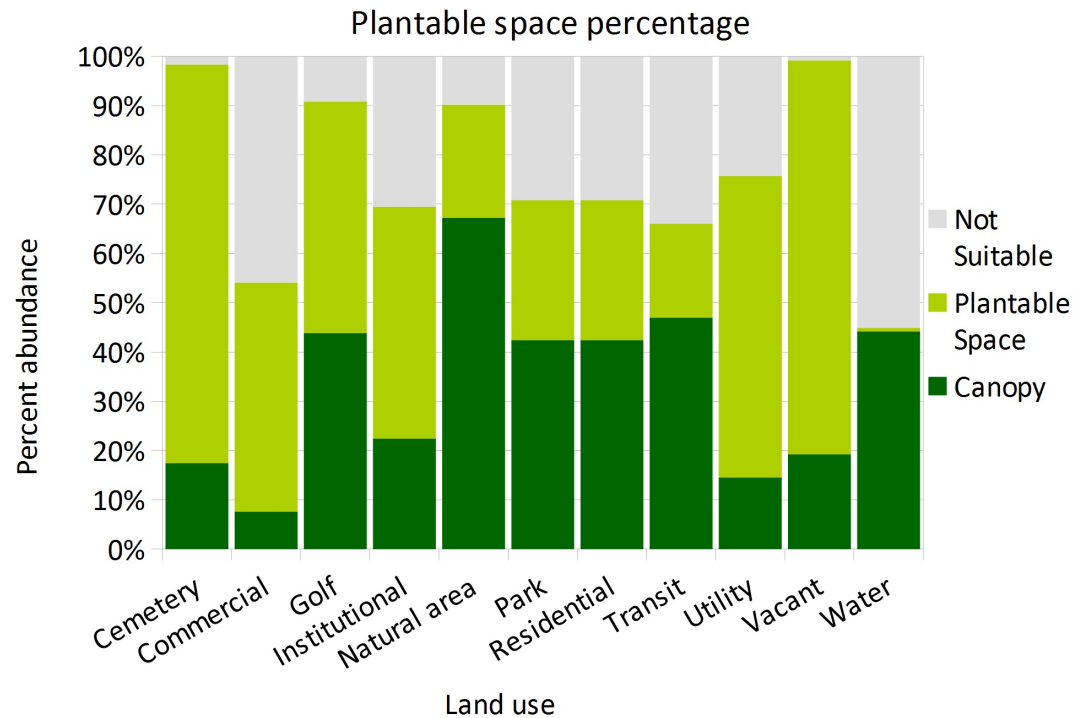


Fig 4: Current canopy and possible planting space across land use types.

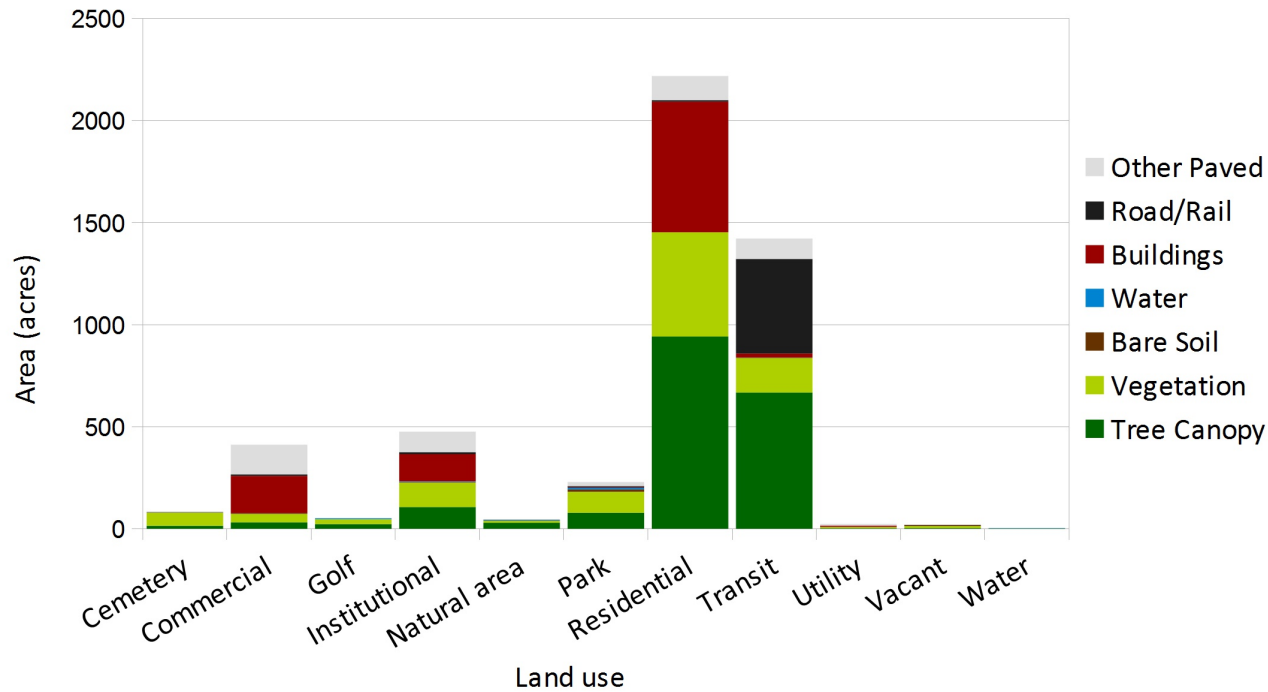
By combining vegetation, bare soil and other paved surface categories we can identify which land use types have the most room for growth. In Evanston, the highest proportions of plantable space are found in cemeteries and vacant properties (Fig. 4).



# Evanston Urban Forest Summary



Land cover area by land use



While vacant properties and cemeteries have a high proportion of plantable space, these land use types make up a relatively small area in Evanston (Fig. 5). The majority of its land is residential and transit.

Fig 5: The majority of Evanston is residential land use, followed by transit.

# Evanston Urban Forest Summary

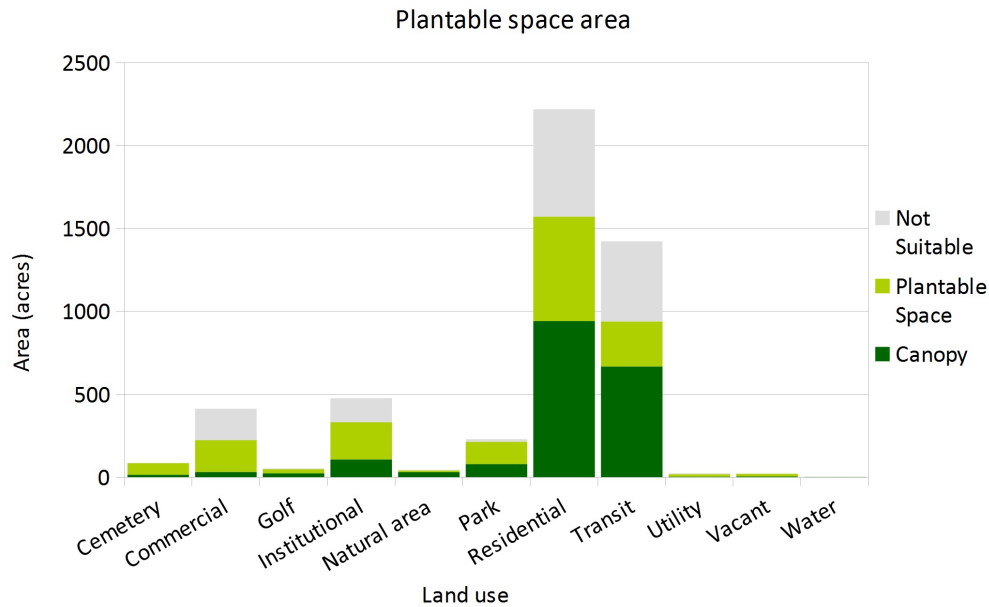


Fig 6: Residential has the greatest potential for increasing the canopy, followed by transit.

Residential and transit land use types have the most area that could possibly be converted to canopy (Fig. 6). Targeting these areas could have the greatest impact in expanding the canopy. However, each of these land use types will require different strategies to increase canopy. Many of the transit properties are publicly owned, and could therefore be the easiest to work with. Residential property owners could be encouraged to plant more trees through tree giveaways, ordinances that encourage tree preservation, or stormwater tax breaks for properties that have more tree canopy.

Table 1: Summary of land cover across land use types.

	Tree canopy		Vegetation		Bare soil		Water		Buildings		Roads and rail		Other paved	
	Acres	Percent	Acres	Percent	Acres	Percent	Acres	Percent	Acres	Percent	Acres	Percent	Acres	Percent
Cemetery	15.0	17.4%	64.5	75.1%	0.0	0.0%	0.0	0.0%	0.1	0.2%	1.3	1.6%	4.9	5.7%
Commercial	31.5	7.6%	41.6	10.1%	3.7	0.9%	0.1	0.0%	182.9	44.3%	6.5	1.6%	146.6	35.5%
Golf	23.1	43.8%	23.6	44.8%	0.0	0.0%	4.5	8.5%	0.1	0.1%	0.3	0.6%	1.2	2.3%
Institutional	107.0	22.4%	119.2	25.0%	4.1	0.9%	3.0	0.6%	133.4	28.0%	9.3	1.9%	100.6	21.1%
Natural area	29.9	67.2%	8.7	19.5%	1.1	2.4%	3.2	7.2%	0.0	0.0%	1.2	2.6%	0.4	1.0%
Park	78.8	44.8%	103.5	26.3%	11.4	0.0%	8.1	0.0%	3.7	1.9%	4.6	8.7%	19.7	18.2%
Residential	941.8	42.4%	511.2	23.0%	0.0	0.0%	0.2	0.0%	640.0	28.8%	7.3	0.3%	118.7	5.3%
Transit	667.9	47.0%	168.8	11.9%	2.4	0.2%	0.5	0.0%	19.6	1.4%	463.0	32.5%	100.4	7.1%
Utility	3.4	14.6%	5.5	23.6%	0.9	3.8%	0.0	0.0%	5.5	23.5%	0.2	0.8%	7.9	33.7%
Vacant	4.0	19.2%	9.6	45.8%	4.9	23.6%	0.0	0.0%	0.2	0.7%	0.0	0.1%	2.2	10.4%
Water	1.2	44.2%	0.0	0.4%	0.0	0.0%	1.5	55.1%	0.0	0.0%	0.0	0.0%	0.0	0.3%
<b>Total abundance</b>	<b>1903.6</b>	<b>38.1%</b>	<b>1056.2</b>	<b>21.2%</b>	<b>28.5</b>	<b>0.6%</b>	<b>21.1</b>	<b>0.4%</b>	<b>985.5</b>	<b>19.7%</b>	<b>493.6</b>	<b>9.9%</b>	<b>502.6</b>	<b>10.1%</b>

# Evanston Urban Forest Summary



Evanston has higher canopy cover than all of its neighbors, except for Wilmette (Fig. 7). It has similar amounts of gray infrastructure to the majority of its neighbors, except for Chicago which has considerably more.

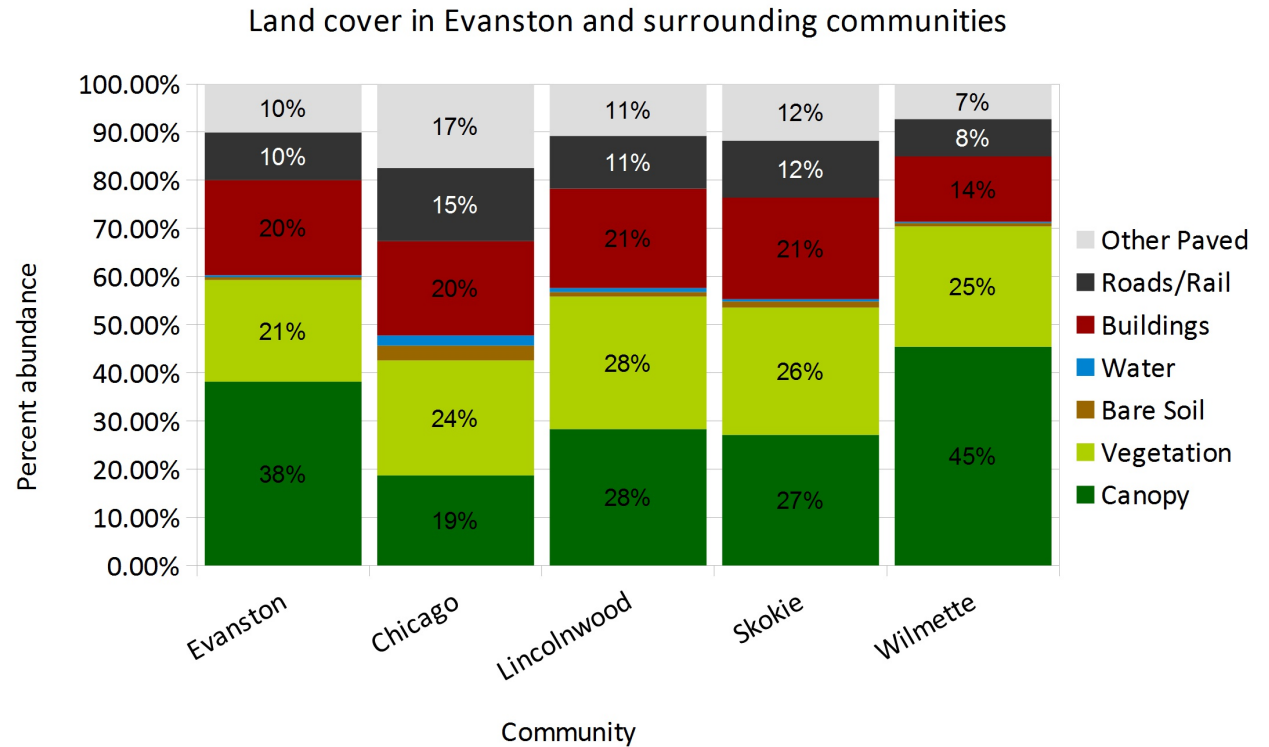


Figure 7: Comparison of the land cover in Evanston and its neighbors.

# Evanston Urban Forest Summary

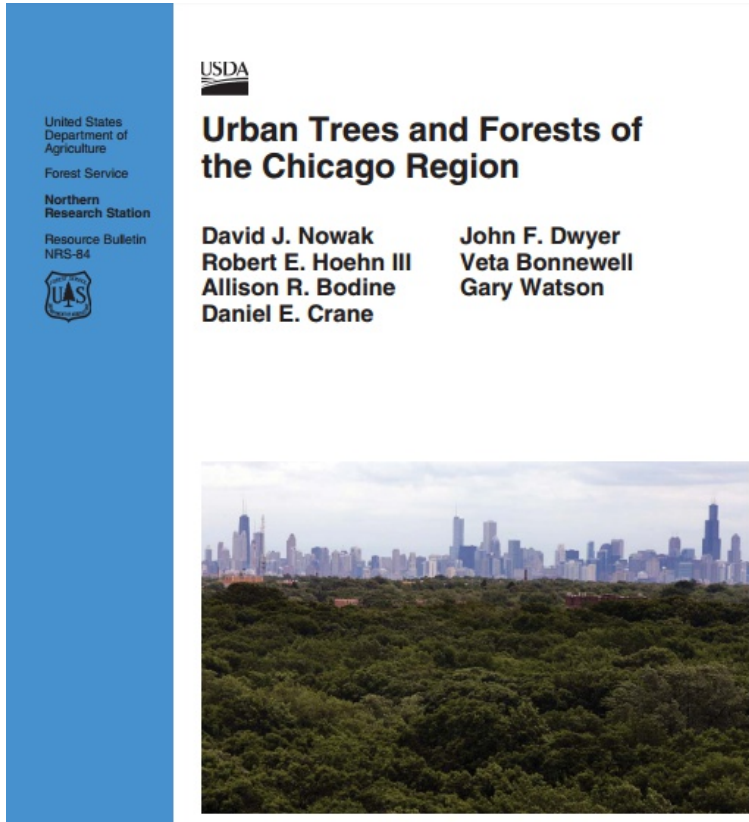


Figure 9: This Forest Service publication be found in its entirety at: <http://www.nrs.fs.fed.us/pubs/44566>.

While understanding canopy is an important component of urban forestry, canopy alone does not show the whole picture. We can use canopy to quantify the number and extent of trees, but not their identity, health, nor vulnerability to pests, diseases or climate change. In order to better understand the urban forest, we need a tree inventory, which will describe the abundance and location of tree species (Fig. 8).

Tree inventories come in many shapes and sizes. The most complete inventories gather data on every tree in the study area, and include information like each tree's species, any health issues the tree may have, and its specific location. This sort of inventory is invaluable for planning and monitoring the urban forest's health and growth over time. The Morton Arboretum and the USDA Forest Service conducted a sample inventory across the seven county region, and determined species composition at the county scale (Fig. 9). This resource is invaluable in understanding broad-scale composition.

To measure species composition on a finer scale, rely on inventories that measure every tree. Many communities, including Evanston, have conducted such inventories on public property. We can use these inventories to better understand the state of its urban forest, and to compare municipalities who have an inventories to each other and to the region as a whole.

All calculations in this report were made using a 2014 inventory of Evanston's municipal trees. It should be noted that this only represents a small portion of the trees in Evanston, and a more complete inventory is necessary to further explore the urban forest.



Figure 8: Measuring tree size is a critical component to completing a tree inventory.

# Evanston Urban Forest Summary

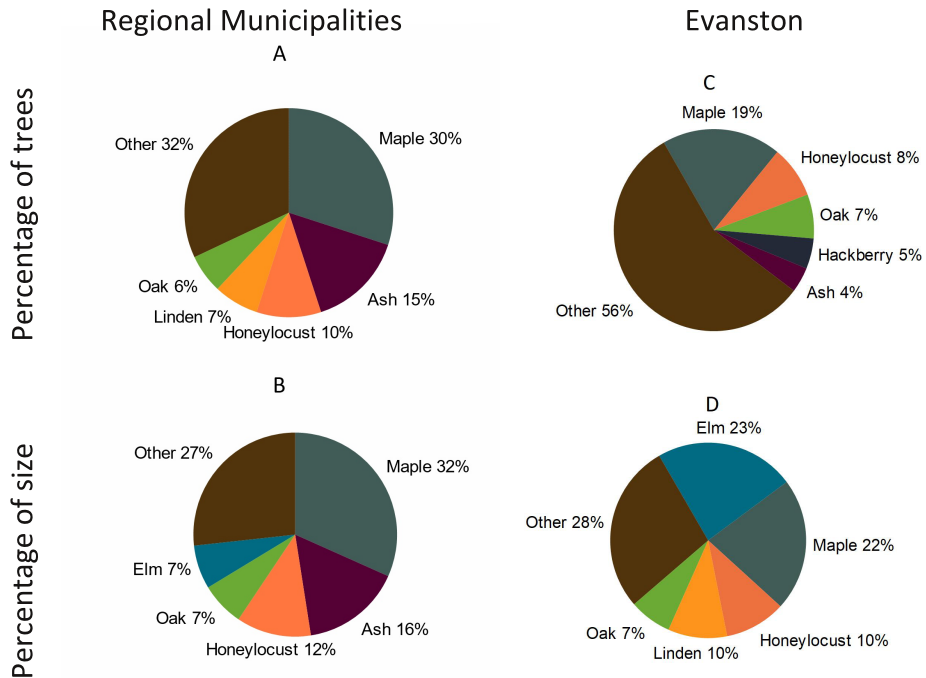


Figure 10: Region-wide, maple is the most abundant genus by number of trees in municipal plantings (A), as well as by proportion of canopy (B). Evanston has a lower percentage of maples, ashes and honeylocust than the region as a whole and considerably more large elms (C and D).

Inventories allow us to look at diversity in two ways, by the abundance of individual trees, and the proportion of the entire canopy that these trees make up. To determine the second figure, we can use the diameter of the trees as a correlate for canopy abundance, as those values are closely related. Both of these measures are important. Number of individual stems is useful when calculating the number of trees that might be affected by a given pest or disease. The abundance of canopy will show how the entire forest might change. That is, losing ten, small apple trees would have a much smaller impact on the ecosystem services that a forest offers than losing ten, mature oaks. Figure 10 shows the most abundant genera in Evanston and across 55 other municipalities.

Many municipalities have very low species diversity. They rely heavily on tried and true species, like Freeman maples, white ash and honeylocust. Maples, on average, comprise 30% of municipal plantings. Ashes were generally in similar abundances, and losing them was a terrible ordeal. As devastating as losing ashes was for the Chicago region, losing maples would be much worse.

This illustrates how critical it is to actively increase species diversity where possible. Most pests and diseases (like emerald ash borer and Dutch elm disease) only attack a specific species or genera of plants. By diversifying species, we can ensure that our forest is resilient to these attacks. CRTI recommends that municipalities strive to have no more than 15% of a single family, 10% of a genus, and 5% of a species in their plantings. These guidelines should be met not only across the whole municipality, but at smaller scales like individual blocks.

Evanston has a more sustainable species composition than the rest of the region, with fewer maples, ashes and honeylocust (Fig. 10C). It also has an abundance of mature elms, giving them a high percentage by size.



# Evanston Urban Forest Summary

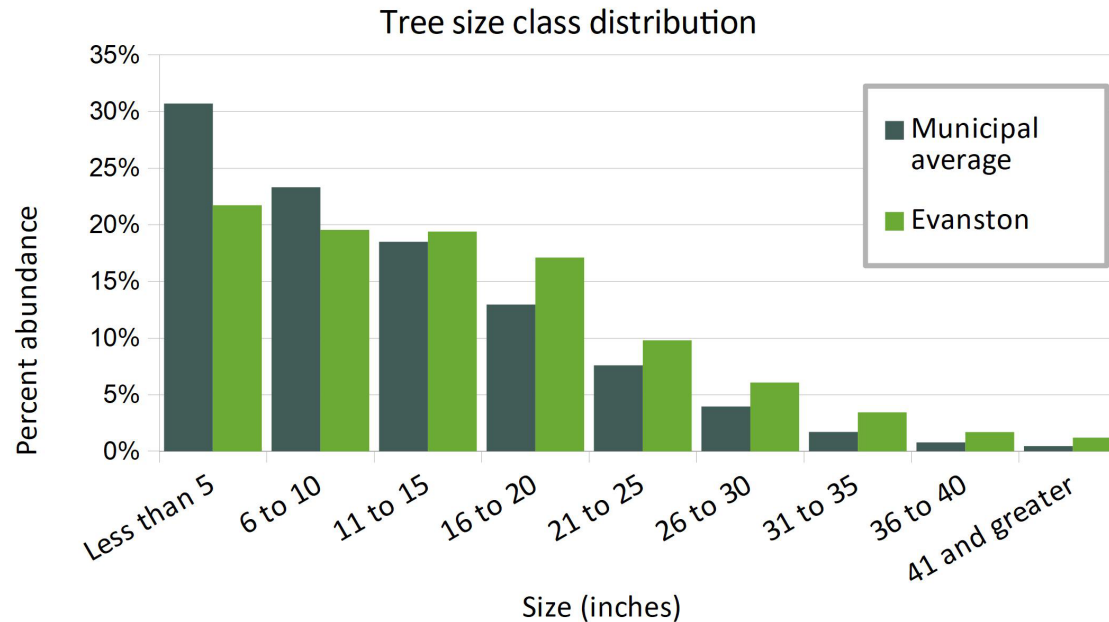


Figure 11: There are more trees in smaller age classes than in larger ones in Evanston and across all municipal inventories. Evanston's, however, has a slightly more flat distribution of tree sizes, with more large trees.

in the smallest size class, but there is a higher abundance of larger trees. This high survivorship of large trees indicates good tree management. However, Evanston needs to be sure that smaller trees are being planted to fill in as these large trees reach the end of their lives.

While size diversity is sustainable on the municipal, county and regional scale, it is also important to zoom into smaller areas, like specific subdivisions or properties. Planning for size class diversity on this level is important to local ecosystem services, like reducing energy use, managing stormwater and retaining soil.

There is another type of diversity to consider beyond species diversity. A sustainable forest has a variety of ages and sizes of trees. If all of the trees in an area were planted at the same time, they will grow, age and die at the same time. When these trees reach the end of their lives, it could leave a property without trees.

For that reason, it is important to try to increase age diversity of a forest. This can be done by planting trees over several years, planting trees with different growth habits (some trees grow quickly and have shorter lifespans than others), and by under planting aging trees, so that something is ready to replace them when they die.

Paying attention to size diversity is especially critical when recovering from emerald ash borer. Many communities have vowed to replace all of the trees that they remove, but this could become problematic if they are planting all of those trees within a short time period. It may be better for overall health of the forest to space these plantings out over several years.

Overall, size diversity averaged across all municipalities looks sustainable (Fig. 11). There is room for some trees to die between each age class, with plenty to remaining to grow into the next size class. Evanston has the most trees

# Evanston Urban Forest Summary



Urban trees are extremely valuable. Research has allowed us to quantify the values that trees provide, and these values go far beyond the aesthetics that are readily recognized. For example:

- Urban trees save energy by reducing surface temperatures and shading buildings.
- They store carbon dioxide and remove pollutants from the air.
- They intercept stormwater and help reduce flooding.
- Residents preferentially buy properties that have more trees, meaning that trees increase property values.

The i-Tree suite of tools was developed by the US Forest Service. They allow users to calculate tree benefits at a variety of scales, from an individual tree, to entire tree inventories, to landscape scale assessments of canopy and hydrology. For more information on i-Tree tools and methodology visit [iTreetools.org](http://iTreetools.org).

Figure 12 shows the benefits that all of the trees (including trees public and private property) in Evanston offer. These values were calculated with i-Tree Landscape. Each year, Evanston's trees provide the municipality with \$2,078,700 worth of benefits. These trees also store a lot of carbon, which is valued at an additional \$3,613,800.

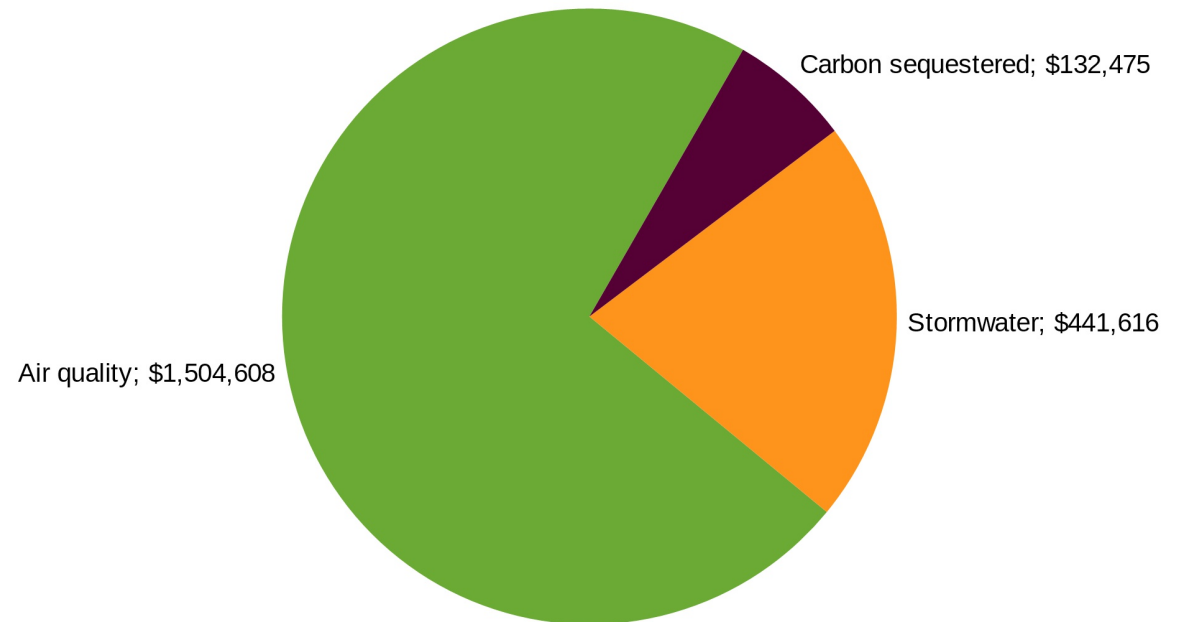


Figure 12: Trees offer myriad benefits, including intercepting stormwater, improving air quality and removing carbon from the atmosphere.

# Evanston Urban Forest Summary



Cities tend to be hotter than rural areas because buildings and pavement absorb the sun's energy and release it as heat. This is known as the urban heat island effect. High urban temperatures increase the use of energy within buildings. It can also cause a variety of health issues to residents, and extreme heat can even cause death. Trees help lower urban temperatures by shading built surfaces and through evaporative cooling. Urban areas that have more tree canopy tend to have lower surface temperatures (Figure 13). Planting more trees in parking lots and around buildings can be especially helpful in reducing urban temperatures and making cities more comfortable.

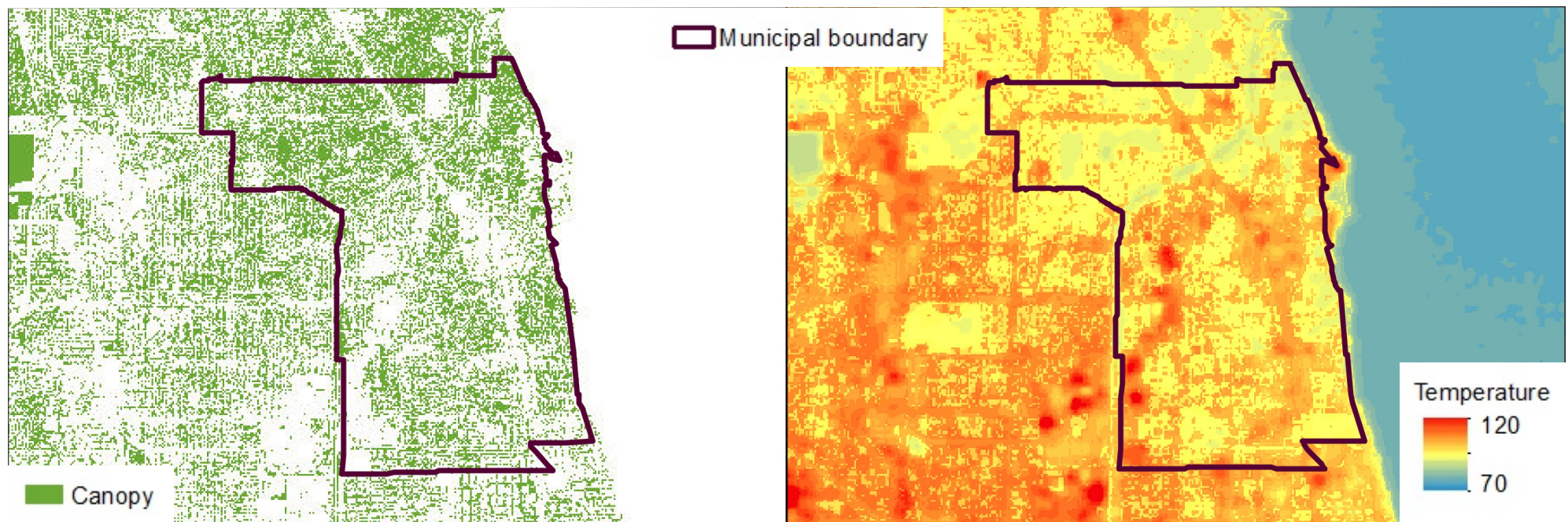
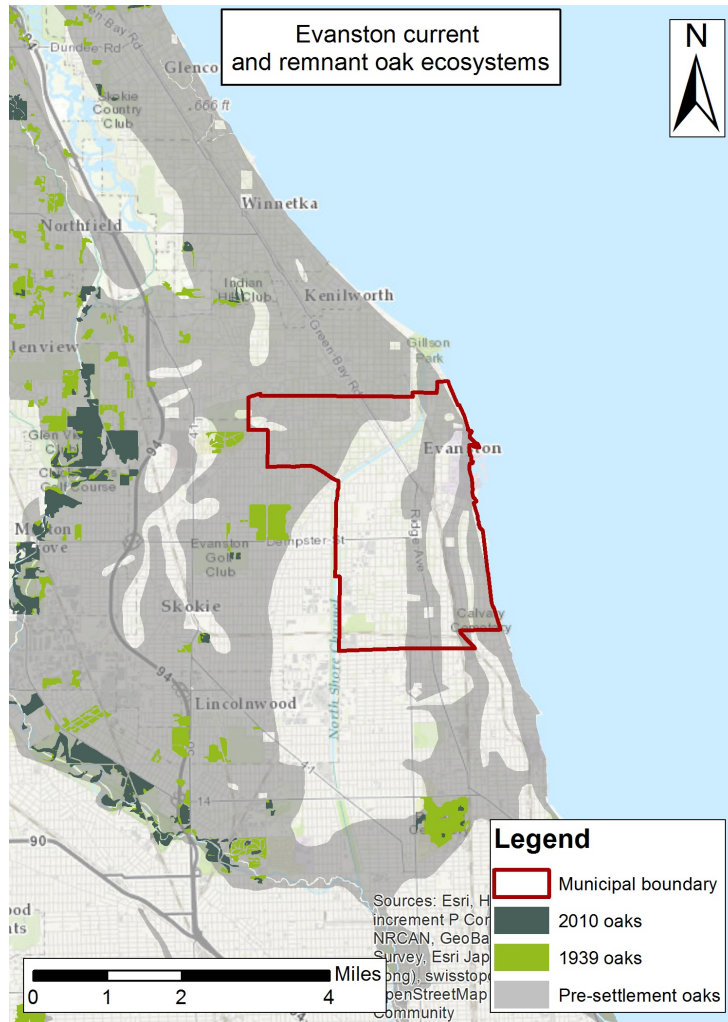


Figure 13: The image on the left shows tree canopy and on the right shows surface temperature. Surface temperature was calculated using a landsat image from September 2014. Areas that have higher tree canopy tend to have lower temperatures.



# Evanston Urban Forest Summary



Oaks are a keystone species in our region's ecology. They provide habitat and food for countless animals, and they influence which plants grow around them. Prior to Euro-American settlement, they were the most abundant tree species in the region. However, conversion of natural areas to agriculture and development has removed many of the oaks from our region. Only 17% of oak ecosystems remain in the Chicago region. For more information on oak ecosystems in the Chicago region, see Chicago Wilderness's *Oak Ecosystem Recovery Plan*.

Prior to Euro-American settlement, oaks made up 60% of the region's canopy. Currently, in Evanston, they account for only 7% of the canopy. Adding additional oak trees, or using oaks to replace dying ashes, could serve to increase species diversity in Evanston, and to improve habitat for the birds, insects and wildlife that depend on them.

Restoring oak ecosystems is a major focus of CRTI. It's efforts include improving oak management in natural areas, and encouraging their use in municipal plantings. Many municipalities avoid oaks because foresters believe that they do poorly as street trees. CRTI strives to dispel these biases, and to teach foresters how oaks can be used effectively in urban areas. The expanded use of oaks can help increase species diversity, and continue the legacy of oaks in our region.

Municipal plantings are not the only place where oaks can be used. Evanston might also consider working with residents and commercial land owners to increase oaks abundance across all land use types. This could be done through programs like tree give-aways, or handouts that describe the benefits of planting oaks. CRTI is creating documents and strategies that could help in this endeavor.

Figure 14: Oak ecosystems were abundant prior to Euro-American settlement. This map shows which of these ecosystems still remained in 1939 and 2010.

# Evanston Urban Forest Summary



Woody invasive species like European buckthorn and bush honeysuckles make up almost one in three trees in the region. These shrubs were introduced as ornamental specimens, but they have escaped cultivation. Birds eat the berries produced by buckthorn and honeysuckle, allowing the seeds to be dispersed into natural areas. Both genera are extremely disruptive to native plants and animals. They create dense thickets, and prevent other species from growing around them (Fig. 15). In natural areas, they are one of the leading contributors to reduced oak regeneration.

Woody invasives are the most abundant in Cook, DuPage and Lake Counties, but they are becoming problematic region-wide (Fig. 16). While there are very few woody invasives in Evanston's inventory, these trees likely exist on private property, or on unmanaged land. It is imperative to remove buckthorn from all land uses, as the seeds can easily travel to natural areas. It is difficult to dictate plantings on private property, but educating residents can encourage them to remove it of their own accord. This could include signage explaining invasive removal on public property, or expansion of programs like Conservation@Home.



Figure 15: A buckthorn thicket. Note that no other species are growing beneath the buckthorn.

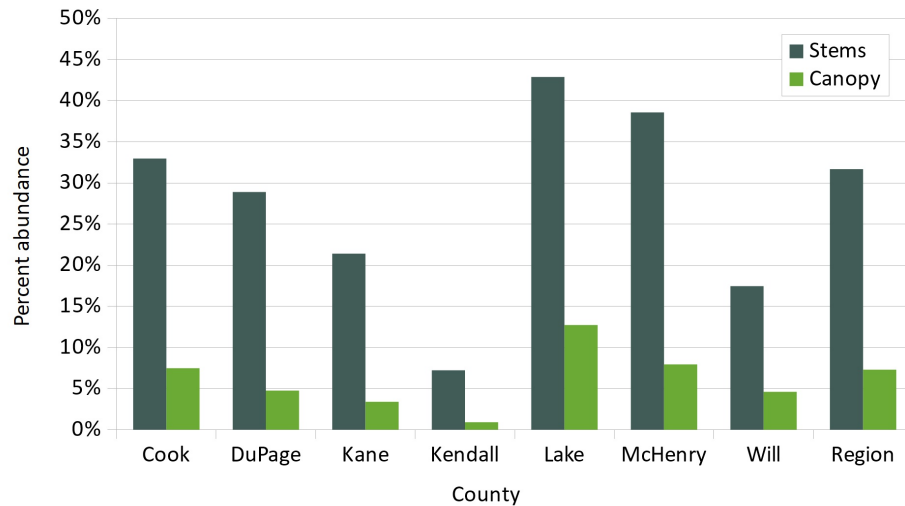


Figure 16: Woody invasive abundance across all counties. They are the most abundant in Lake and McHenry Counties, but is a threat region-wide.